

Child & Family Services

Performance Report

V3

March 2019



Welcome

Dear Colleagues,

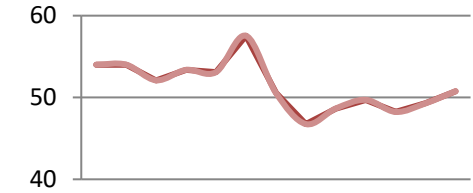
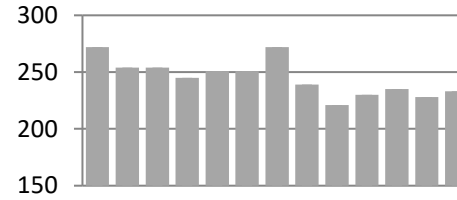
TBC

Head of Child and Family Services – March 2019

Our Headline Performance this Month

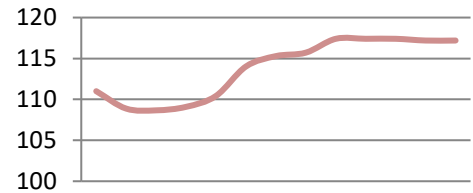
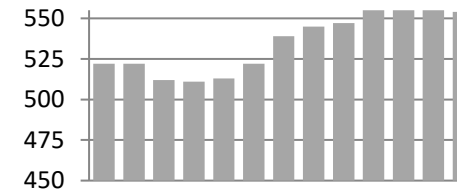
Child Protection

There are **240** (233) children on the children protection register. This is an **increase of 7** from last month giving us a rate of **51** Per 10,000.



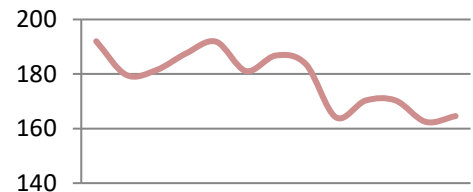
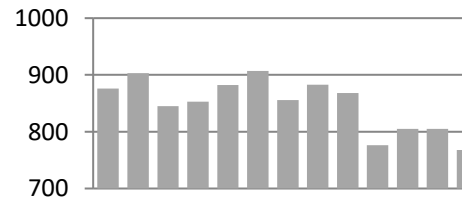
Looked After Children

There are **554** (554) children looked after. This is **the same as** last month giving us a rate of **117** Per 10,000.



Children in Need of Care and Support

There are **778** (768) children in need of care and support. This is an **increase of 10** from last month giving us a rate of **165** Per 10,000.



Wellbeing

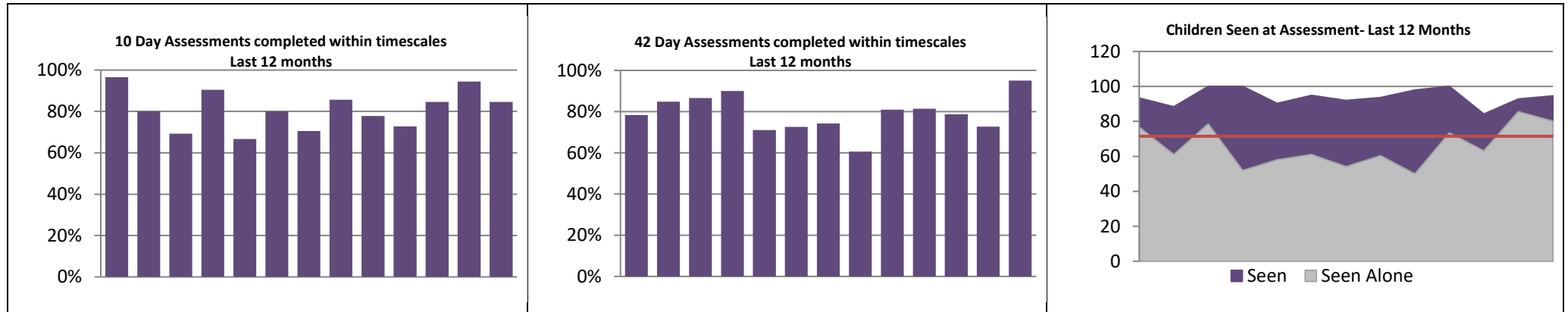
Measure / Metric	Result	Target	What's Good?	Status
The number of contacts received by the service – instances of Information, Advice, Assistance or Assessment :	937 (876)		Low is Good	
The percentage of these contacts that were helped by providing information only:	339, 36.18% (42.47%)		High is Good	
The percentage of these contacts that were diverted to other services :	88, 9.39% (8.90%)		High is Good	
The percentage of these contacts that were passed on for formal assessment :	104, 11.10% (12.33%)		Low is Good	
The number of repeat referrals in the month:	16, 15.38% (8.33%)	Less than 15%	Low is Good	



What is working well?	What are we worried about?	What do we need to do?
	The number of repeat referrals in March has increased. On exploring this further a family of 7 was re referred to the department.	Hub manager has requested an example from IIAA of a good closure record to share good practice with staff.

Supported Care Planning - Assessments

Measure / Metric	Result	Target	What's Good?	Status
Number of 10 day Assessments Carried out during the month:	13 (18)		Lower is Better	
The percentage of 10 day assessments carried out within timescales :	11, 84.62% (94.44%)	93%	High is Good	
Number of 42 day Assessments Carried out during the month:	81 (121)		Lower is Better	
The percentage of 42 day assessments carried out within timescales :	77, 95.06% (72.73%)	90%	High is Good	
The percentage of Assessments where there is evidence the child has been seen by a qualified worker :	94.55% (92.77%)	More than 90%	High is Good	
The percentage of Assessments where there is evidence the child has been seen alone by a qualified worker :	80.00% (85.54%)	More than 45%	High is Good	

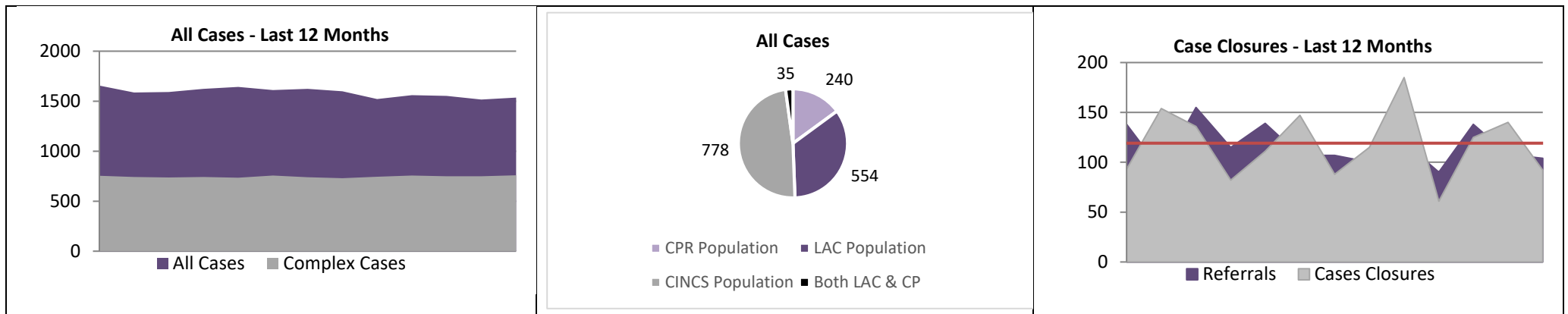


What is working well?	What are we worried about?	What do we need to do?
Number of 42 day assessment completed in timescales has increased to 95.06%. This may be as a result of ongoing conversations taking place with practice leads around undertaking a proportionate		

<p>assessment. Many teams are also managing single assessment performance well and able to plan ahead with workers time to undertake their assessment within timescales. Teams are also now provided with a report that highlights the assessment at 30days to ensure the worker is aware of the date of submission of their assessment for quality assurance or amendments. TCO are actively involved in ensuring agreed dates are in SW and practice leads calendar.</p> <p>Child seen by qualified worker and seen alone continuing to remain high.</p>		
--	--	--

Supported Care Planning – Planning, Reviews and Caseloads

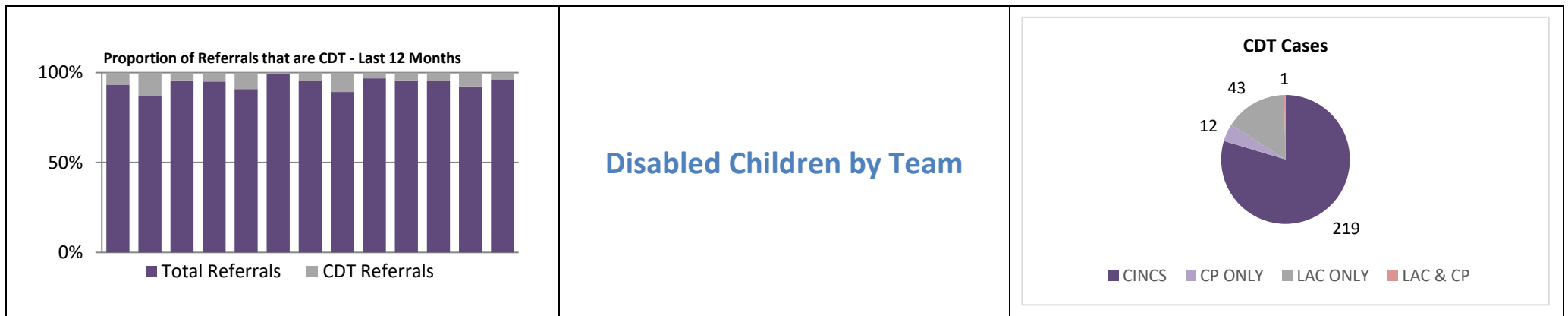
Measure / Metric	Result	Target	What's Good?	Status
Number of Cases of Children needing Care and Support Managed by the Service at the end of the month:	1537 (1517)		Lower is Better	
Of these, the percentage that represent complex cases (LAC, CP):	759, 49.38% (49.37%)		Higher is Better	
The number of cases closed to Child and Family Services during the month:	92 (140)		Higher is Better	
The percentage of reviews of Children in Need of Care and Support held during the month within prescribed timescales:			High is Good	
The percentage of CINCS allocated to a qualified worker at the end of the month:	606, 77.89% (75.91%)		High is Good	



What is working well?	What are we worried about?	What do we need to do?
We are continuing to close a high level of cases.		

Supported Care Planning – Children with a Disability

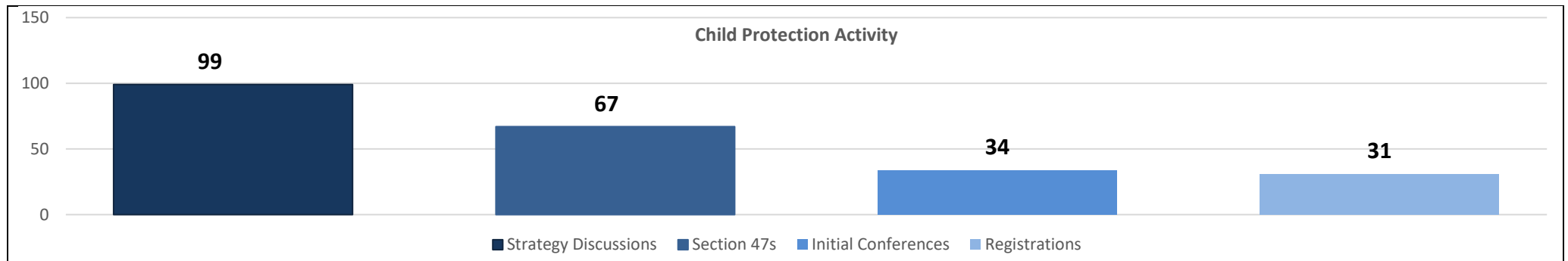
Measure / Metric	Result	Target	What's Good?	Status
The number of disabled children referred to the Child Disability Team during the month:	4 (9)		Range	
The total number of disabled children with a Care and Support Plan at the end of the Month:			Range	
The number of disabled children provided with Direct Payments at the end of the month:			Range	
The number of disabled children transitioning to the Care of Adult Services during the month:			Baseline	
The number of disabled children provided with respite care at the end of the Month:			Range	



What is working well?	What are we worried about?	What do we need to do?

Safeguarding – Child Protection Activity

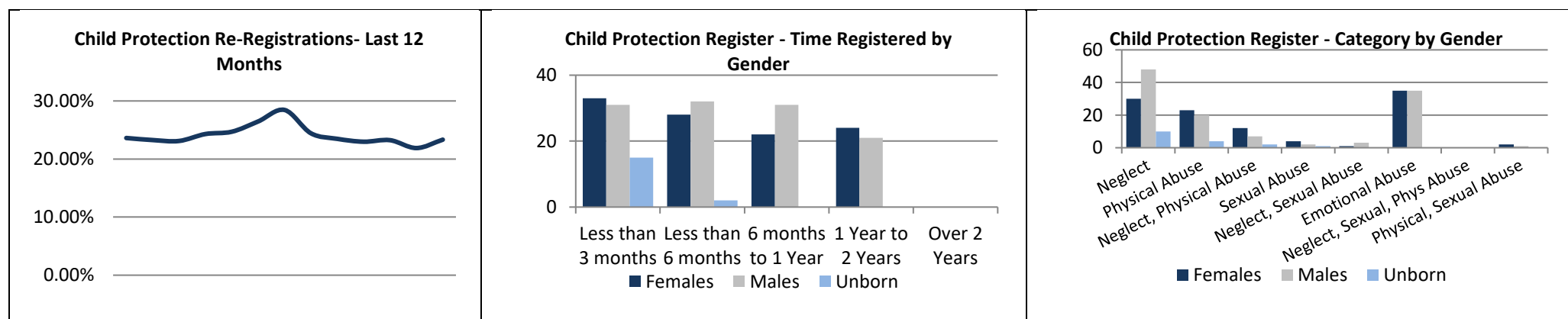
Measure / Metric	Result	Target	What's Good?	Status
The total number of children added to the Child Protection Register in the month.	33 <i>(23)</i>		Low is Good	
The total number of children removed from the Child Protection Register in the month.	26 <i>(18)</i>		Higher is Better	
The Percentage of Initial Conferences held in timescales during the month.	34, 100% <i>(100%)</i>		High is Good	
The percentage of Initial Core Group Meetings held within timescales during the month.	23, 92% <i>(100%)</i>		High is Good	
The percentage of visits to children on the Child Protection Register that were on time or not overdue.	93.18% <i>(95.93%)</i>	90%	High is Good	



What is working well?	What are we worried about?	What do we need to do?
<p>Initial Conferences continue to be 100%</p> <p>The percentage of Initial Core Groups and Visit to children on the Child Protection register continues to maintain high.</p>	<p>The amount of children added to the CP register has increased however the amount of children removed has also increased.</p>	

Safeguarding – Reviews and Allocations

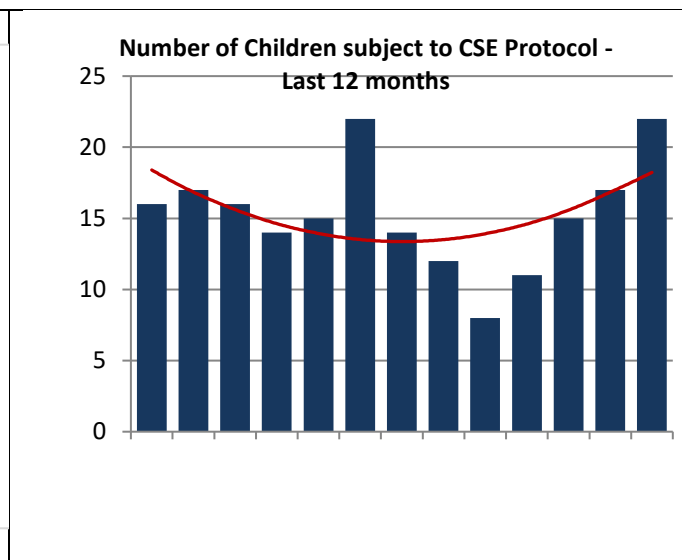
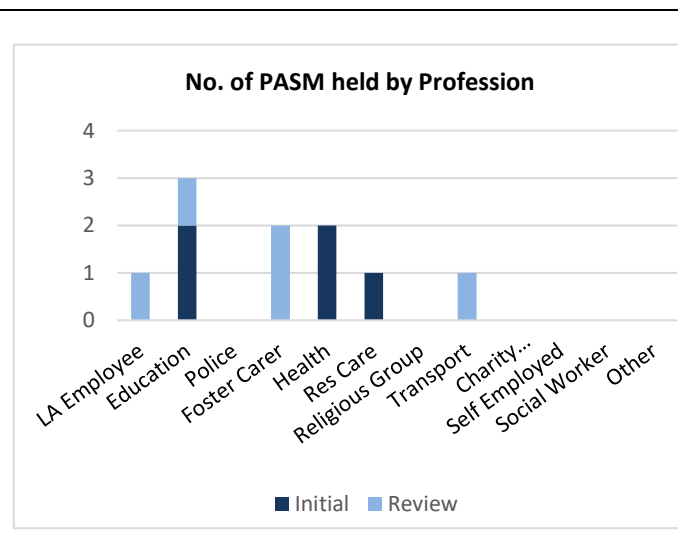
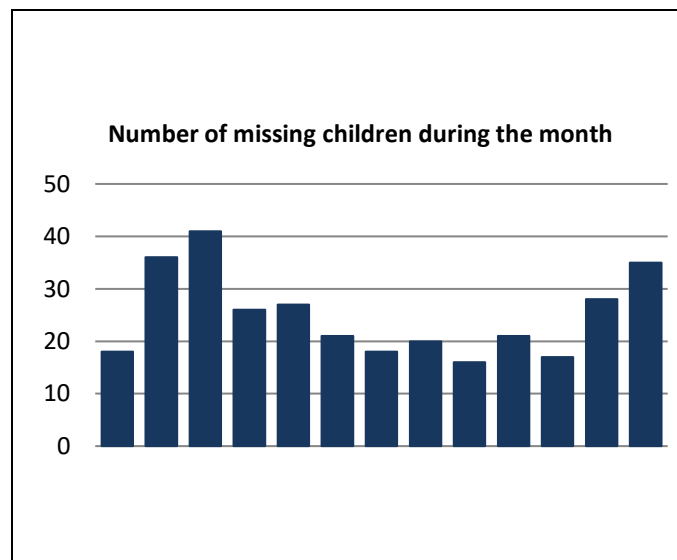
Measure / Metric	Result	Target	What's Good?	Status
The percentage of children on the Child Protection Register that have been registered previously .	56, 23.33% <i>(21.89%)</i>	Less than 20%	Low is Good	
The length of time on the Child Protection Register for those children removed during the month.	230 days <i>(288 days)</i>	Range of 100-300	180-270 is Optimal	
The percentage of Review Conferences held on time during the month.	58, 100% <i>(100%)</i>	98.5%	High is Good	
The percentage of children de-registered in the month who were de-registered at the first review :	4, 15.38% <i>(27.78%)</i>	No Target Set	Ceiling?	
The percentage of children on the Child Protection Register Allocated to a qualified worker at the end of the month.	240, 100% <i>(100%)</i>	100%	High is Good	



What is working well?	What are we worried about?	What do we need to do?
The number of children de-registered at the first review has decreased.	The amount of children registered previously has started to increase.	SQU/SCP weekly meetings will allow an arena to review cases de registered at the first review on an ongoing basis in order to develop shared learning around threshold and quality of work.

Safeguarding – CSE, Missing Children and Professional Abuse

Measure / Metric	Result	Target	What's Good?	Status
The number of children managed under the protocol for Child Sexual Exploitation at the end of the month:	22 (17)	No Target Set	Lower is Better?	
The number of episodes of children going missing or absent without authority from home during the month:	64 (34)	No Target Set	Lower is Better	
The number of children that these episodes related to:	35 (28)	No Target Set	Lower is Better	
The number of Professional Abuse Meetings held during the month:	10 (14)	No Target Set	Low is Good	

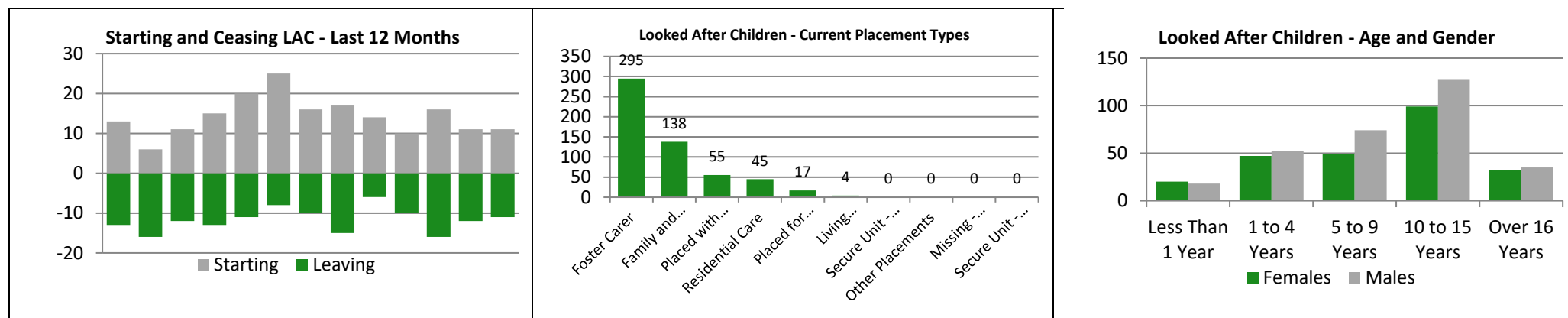


What is working well?	What are we worried about?	What do we need to do?
	The number of children managed under the CSE protocol has increased. The number of children going missing/absent without authority has increased. This however may reflect Kelly Shannon starting her post as Practice Lead for disruption of CSE. Kelly has	It would be helpful to have a breakdown of how many of these children are missing and how many are absent without authority - in addition to how many are Swansea cases and how many from other authorities.

	identified the need to work with the TCO's in effectively making use of Paris alerts when children are going missing or police reports are received in respect of this. This may be causing an increased of strategy meetings where CSE issues may be identified.	
--	--	--

Permanence – Looked After Children

Measure / Metric	Result	Target	What's Good?	Status
The number of children becoming looked after during the month:	11 (11)	No Target Set	Low is Good	
The number of children ceasing to be looked after during the month:	11 (12)	No Target Set	Higher is Better	
The percentage of children becoming looked after during the month who had a completed Care and Support plan with 10 working days of becoming LAC:	11, 100% (100%)	100%	High is Good	
The percentage of LAC Statutory Visits in the month that were completed or not overdue:	94.02% (87.93%)	90%	High is Good	
The percentage of Looked After Children allocated to a qualified Social Worker:	550, 99,28% (100%)	100%	High is Good	

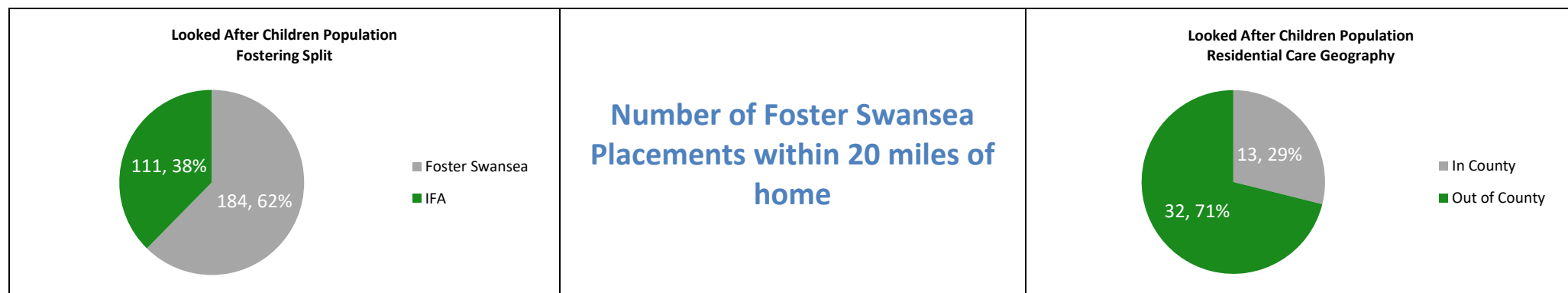


What is working well?	What are we worried about?	
<p>Looked after children numbers have remained stable.</p> <p>LAC stat visits have increased to 94.02%</p>	<p>The number of children Looked After Allocated to a qualified worker.</p>	<p>A number of trajectories have been developed with workers for PwP cases. This will continue with the hope that all children placed under PwP will have a clear plan for working towards permanence at home and revoking care orders.</p>

		<p>Allocation issue as a result of sickness. Case worked by Practice Lead however not moved over on Paris. Work will be completed with business support to ensure that any sickness over 2 weeks is flagged to the hub manager in time to ensure these cases are appropriately re allocated.</p>
--	--	---

Permanence – Reviews and Placement Stability

Measure / Metric	Result	Target	What's Good?	Status
The number of LAC Reviews Carried out during the month:	200 (119)	No Target Set	High is Good	
The number of LAC reviews that were completed within statutory timescales:	200, 100% (99.16%)	95%	High is Good	
The percentage of 4 month LAC reviews which had a plan for permanence:	9, 100% (12, 100%)	No Target	High is Good	
The percentage of PEP's received within 20 school days of becoming looked after:	2, 100% (3, 75%)	No Target	High is Good	
The percentage of looked after children who have had three or more placements in the previous 12 months of being looked after:	64, 11.55% (11.73%)	Between 5% and 8%	Lower is Better	
The number of children/Young People residing in Bed and Breakfast at any time during the month:	3 (1)	Zero	Low is Good	

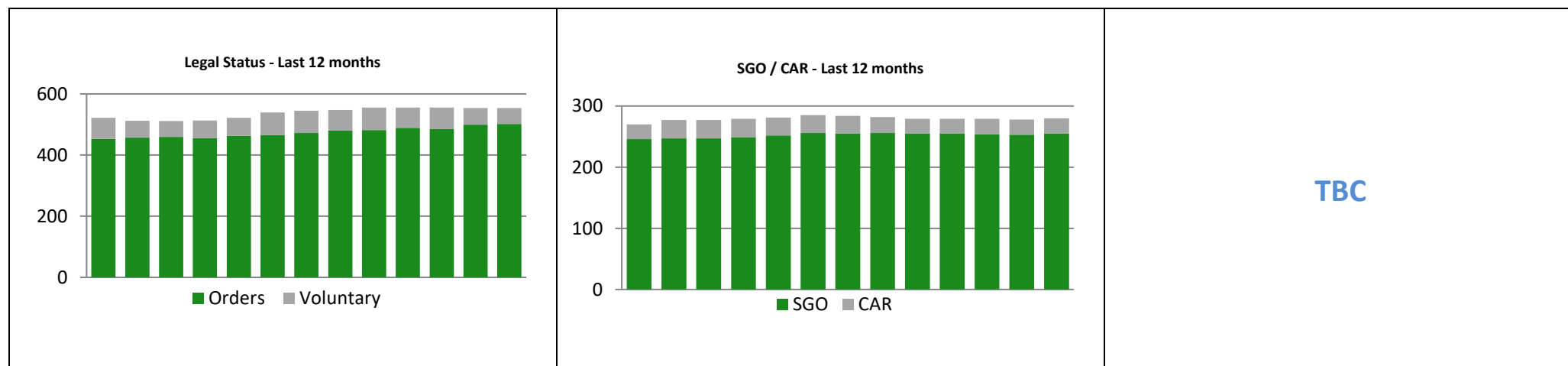


What is working well?	What are we worried about?	What do we need to do?
	We are continuing to have difficulty in receiving a PEP for every child within 20 school days of accommodation. Although this has improved over recent months there continues to be difficulties in	Continue to work with Education on how we ensure a PEP is created for children who are not actively engaged in Education.

	receiving PEP's back for children who are not attending school. All PEP's are sent by the Local Authority to Education within timescales.	Work to be completed with the Performane Team to devlope data around the number of Swansea Placement within Swansea and the neighbouring Authorities.
--	--	---

Permanence – Leaving Care

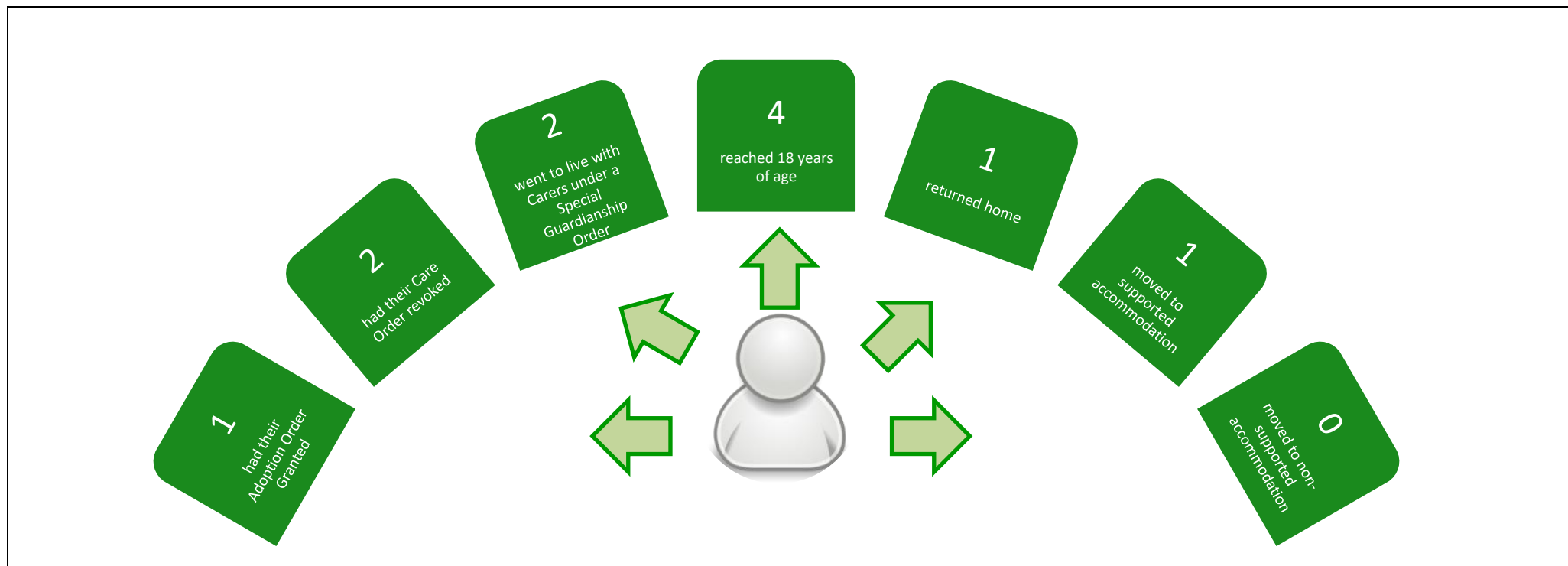
Measure / Metric	Result	Target	What's Good?	Status
The number of cases managed under Special Guardianship Orders and Child Arrangement Orders at the end of the month:	280 (278)	No Target Set	Range of 250-300	
The number/percentage of young people becoming category 2-4 during the month who have an up to date Pathway Plan:	7, 100% (6, 100%)	100%	High is Good	
The number/percentage of young people becoming category 2-4 during the month who have an allocated personal adviser:	6, 85.71% (5, 83.33%)	100%	High is Good	
The number of young people in category 2-4 at the end of the month who were in Education, Employment or Training 12 months after ceasing to be LAC:	1, 100% (1, 100.0%)	No Target Set	High is Good	
The number of young people presenting as homeless during the month:	6 (8)	No Target Set	Low is Good	



What is working well?	What are we worried about?	What do we need to do?
The percentage of young people becoming category 2-4 who have an up to date Pathway Plan continues to be 100%.		Work is currently underway to break down some of the performance data provided in respect of leaving care with the hope that this will help us target areas for improvement.

Permanence – Destination upon Leaving Care

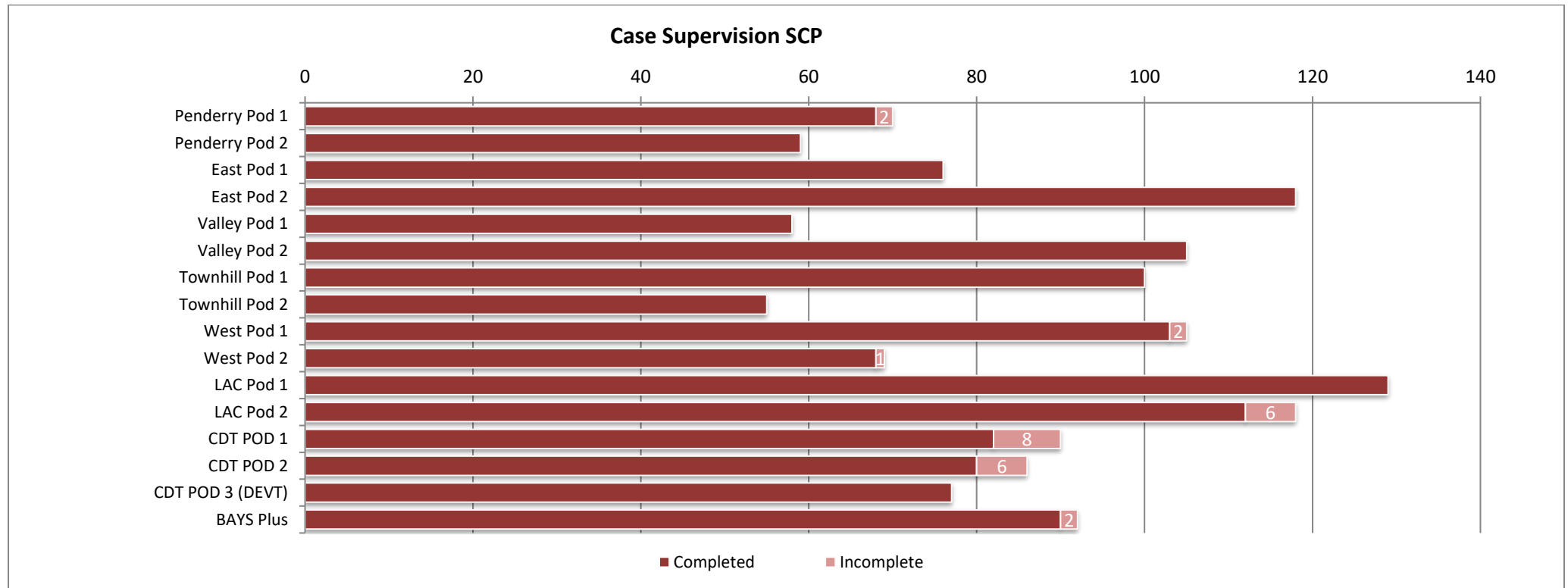
Measure / Metric	Result	Target	What's Good?	Status
The percentage of children supported to live at home at the end of the month:	983, 63.96% (63.48%)	No Target Set		
The percentage of children returning home from care during the month:	5, 45.45% (7, 58.33%)	?	High is Good	



What is working well?	What are we worried about?	What do we need to do?

Quality – Case and Personal Supervision

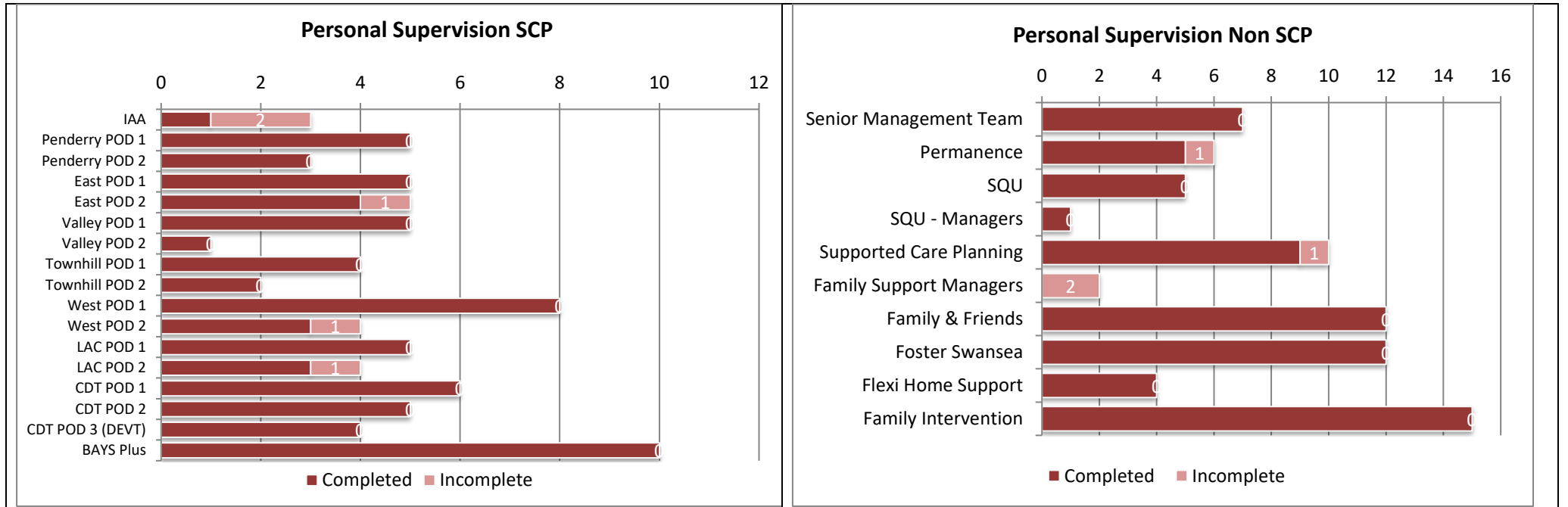
Measure / Metric	Result	Target	What's Good?	Status
The percentage of children in need of Care and Support whose cases were reviewed during the month:	98.08%	90%		



What is working well?	What are we worried about?	What do we need to do?
Supervision levels continue to maintain high.		The supervisin policy is currently under review to consider timescales for supervision dependent of complexity of cases.

Quality – Case and Personal Supervision

Measure / Metric	Result	Target	What's Good?	Status
The percentage of Personal Supervision sessions that took place within prescribed timescales		90%		



What is working well?	What are we worried about?	What do we need to do?

Quality – Signs of Safety Metrics

Measure / Metric	Result	Target	What's Good?	Status
The percentage of Words and Pictures in place within 5 working days from the time of placement:			High is Good	
The percentage of Assessments that have a Three Houses attached:			High is Good	
The percentage of LAC placements and Child Protection conferences where a Family Network Meeting has taken place prior to the event:			High is Good	
The percentage of Case Conferences where there is evidence of a child friendly explanation of the Safety Plan:			High is Good	

--	--	--

What is working well?	What are we worried about?	What do we need to do?
		Commence reporting from Q4

Notes

A large, empty rectangular box with a thin black border, intended for handwritten or typed notes. It occupies the majority of the page's vertical space.